



# PREDICTING MEXICAN-ORIGIN PRESCHOOL-AGED CHILDREN'S SELF-REGULATION FROM MEXICAN-AMERICAN CULTURAL VALUES AND PARENTING PRACTICES

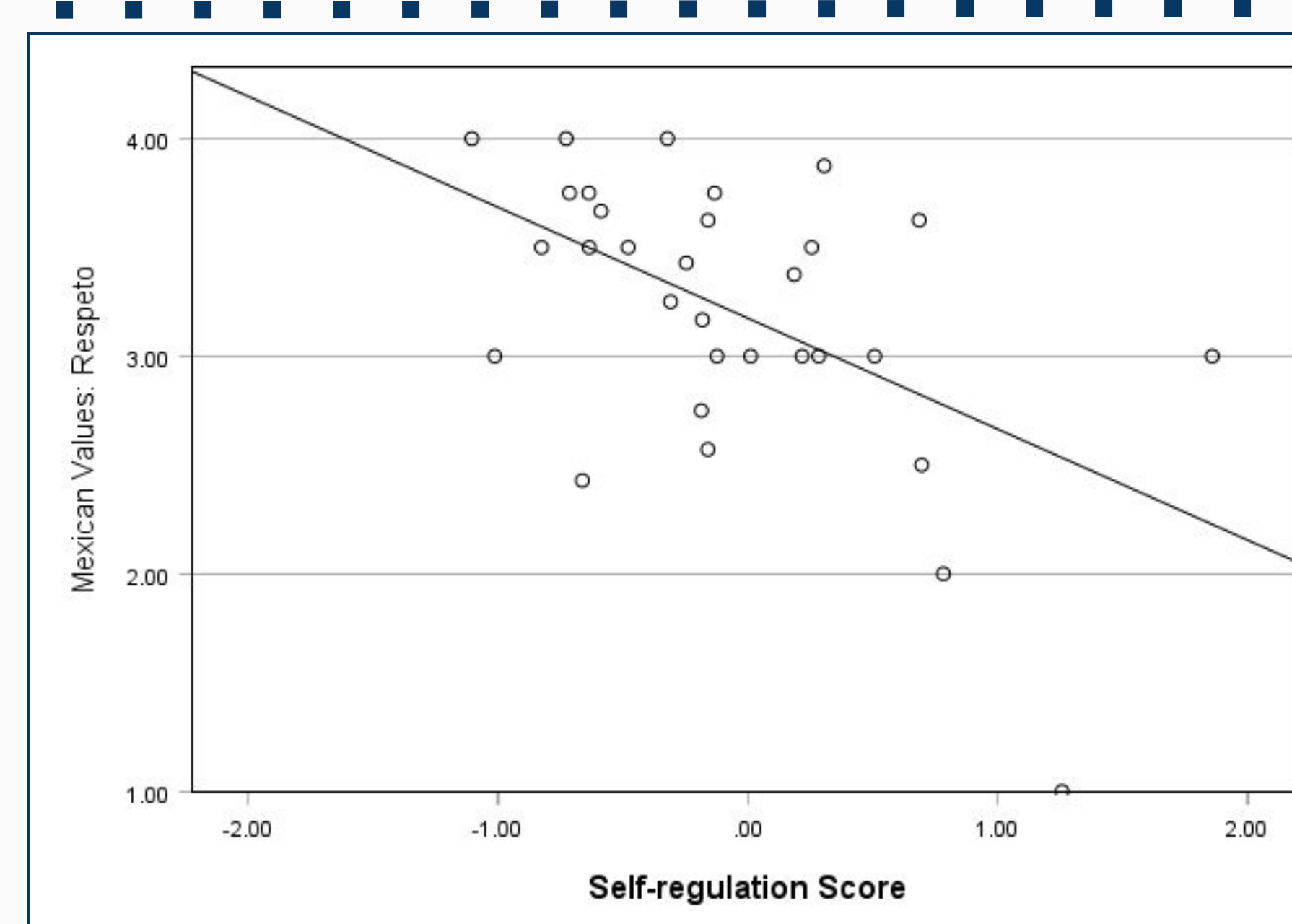
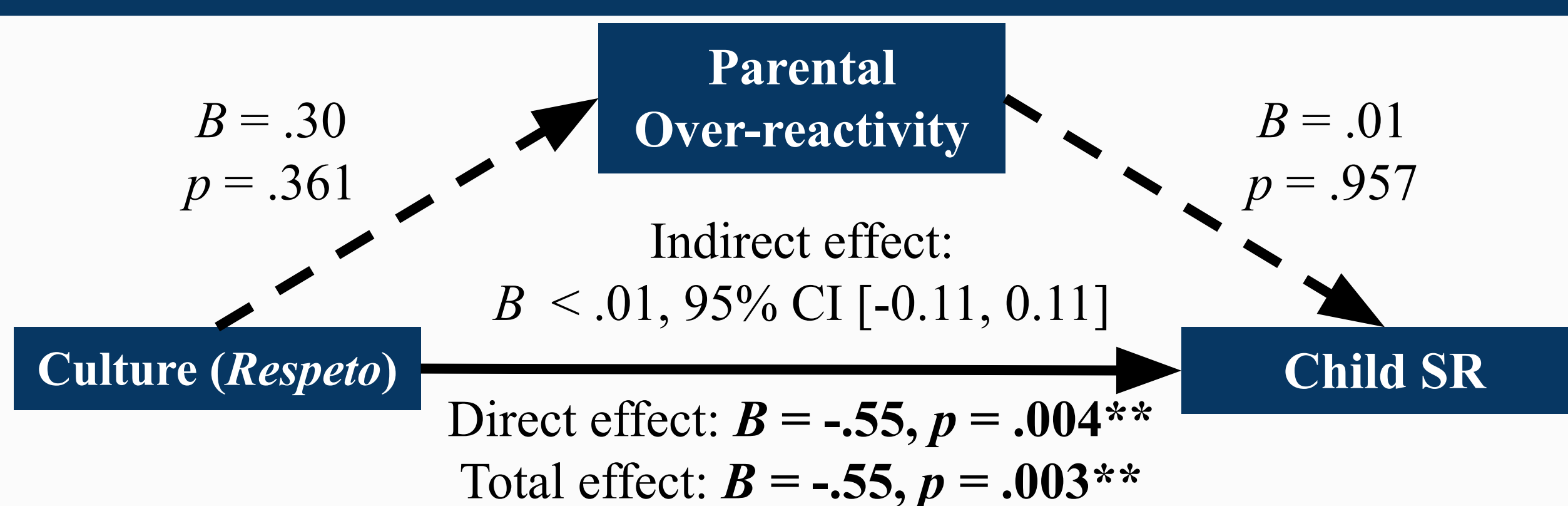
Carmina Alves, B.S., Leslie Andrade, Chase Boyer, M.S., Daniel Ewon Choe, Ph.D., & Leah Hibbel, Ph.D.

Department of Human Ecology: Human Development and Family Studies

## BACKGROUND

- Culture, a shared system used to understand the world,<sup>1</sup> and cultural values, common beliefs, languages and goals,<sup>2</sup> inform parent-child interactions.<sup>3</sup>
- Parent-child interactions have downstream impacts on children's development of self-regulation (SR),<sup>4</sup> the voluntary modification of one's emotions, behavior, and attention.<sup>5</sup>
- Parenting involves specific practices and broader styles that guide actions and decisions in parent-child interactions.<sup>6,7</sup>
- Positive correlations between SR and Mexican cultural values have been found among Mexican-origin adolescents.<sup>8</sup>
- Culture informs parenting, but there are mixed findings about how parenting is influenced.<sup>5</sup>
- Parental warmth and *familismo* (Mexican) are positively correlated.<sup>9</sup>
- Parent reports link poorer SR and negative parenting in adolescents.<sup>8</sup>
- Limited research examines culture's influence on SR development in Mexican-origin preschool-age children.<sup>5,8</sup>
- H1: Greater Mexican values will predict less negative parenting practices (hostility, over-reactivity, laxness).
- H2: Greater Mexican values predict higher child SR.
- H3: Less negative parenting practices will predict higher child SR.
- H4: Parenting practices will mediate the effect of Mexican values on child SR.

## RESULTS



## MAIN FINDINGS

- *Respeto* (Mexican value) is associated with lower child SR ( $r = -.52, p = .003$ ; see Figure 2).
  - No other significant associations between child SR and cultural values
- No significant associations between parenting practices and child SR
- *Respeto* has a direct effect on child SR ( $B = -.55, p = .004$ ; see Figure 1).
- Parental over-reactivity correlated with greater *familismo* ( $r = .38, p = .023$ ), traditional gender roles ( $r = .43, p = .010$ ), and total Mexican values ( $r = .44, p = .007$ )
- Negative parenting practices do not mediate the effect of *respeto* on child SR.

## ACKNOWLEDGEMENTS & REFERENCES

The authors recognize the research personnel in the Hibbel Lab and Development of Externalizing and Self-Control Lab for their support in data collection and analysis. This study was supported by the National Institute of Child Health and Human Development (1R01HD087367-01A1).

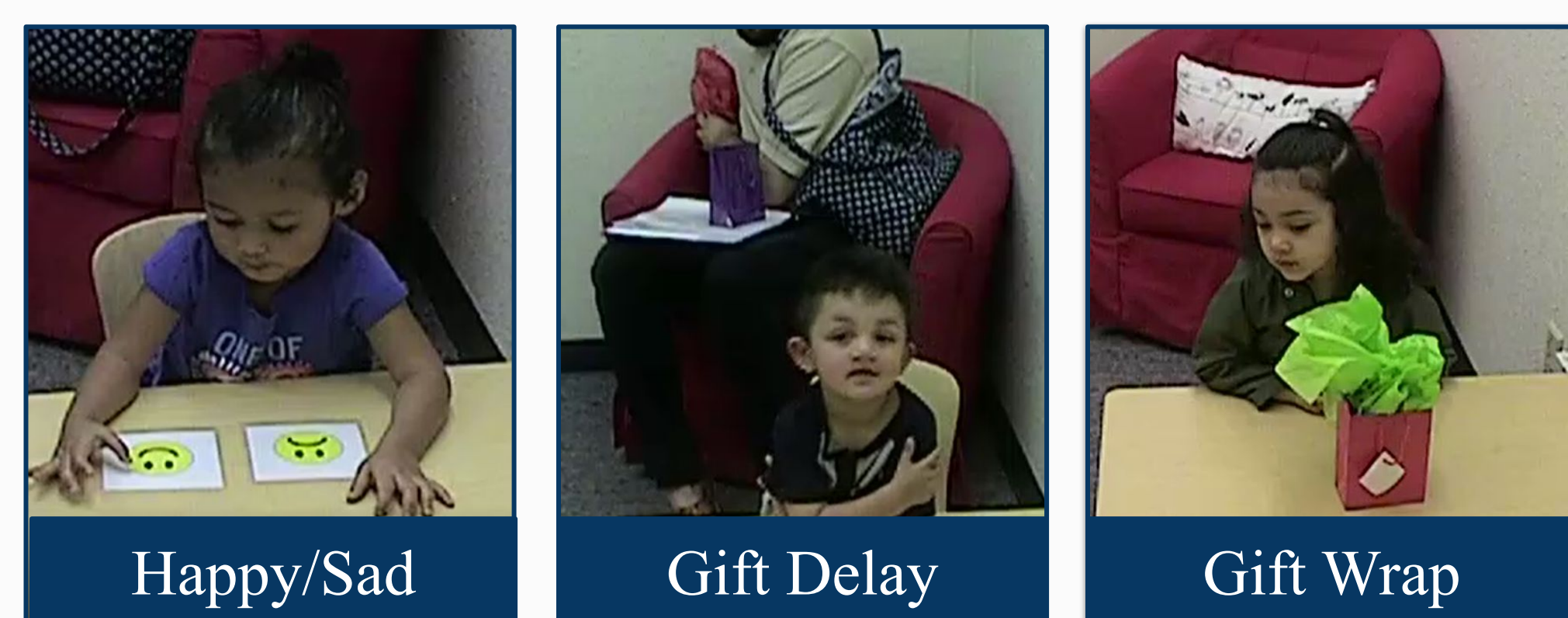
Scan for References!



## METHOD

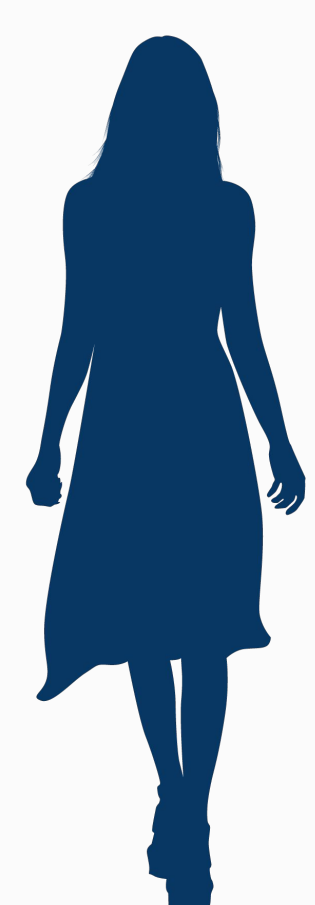


$N = 32$  Mexican-origin children  
 $M_{age} = 36.63$  months  
 $SD_{age} = 0.95$  months, 37.5% female



Children completed six SR tasks: Day/Night, Happy/Sad, Whisper, Dinky Toys, Gift Delay, Gift Wrap.  
 Video data scored in Noldus The Observer XT with high inter-rater reliability (avg.  $\kappa = .87$ )

Total SR score created by standardizing and averaging each task total score ( $\alpha = .73$ )



$N = 32$  parents  
 $M_{age} = 25.45$  years  
 $SD_{age} = 5.36$  years  
 100% mothers



Self-report surveys including 50-item Mexican American Cultural Values Scale (MACV)<sup>10</sup> and 30-item Parenting Scale<sup>11</sup>

### Mexican Cultural Values

- *Respeto*
- *Familismo*
- Traditional gender roles
- Religiosity
- Total score

### Parenting Practices

- Hostility
- Over-reactivity
- Laxness

## DISCUSSION

### Findings and Interpretations

- Our hypotheses were not supported and no mediation was found.
- Families emphasizing *respeto* have preschool-age children with lower SR, but negative parent practices do not mediate this relation.
  - Children's behavior may not align with parental cultural values as behavior is also dependent on their context—an unfamiliar environment in our case.<sup>1</sup>
  - Different aspects of parenting, other than negative practices, may be driving this relationship. One study found a positive association between a positive family learning environment and child SR.<sup>7</sup>
  - Parenting practices were self-reported rather than observed; parents may provide unreliable information.
- Total Mexican values, *familismo*, and traditional gender roles positively correlated with parental over-reactivity.
  - Emphasis on interdependence in Latin American families may lead to greater levels of physical handling of infants to demonstrate parental warmth when compared to European American parents.<sup>12</sup>
  - High *familismo* may act as a protective factor against harsh parenting for Latinx youth.<sup>13</sup>
  - Warm parenting is negatively correlated with traditional gender roles as mothers typically encourage daughters to explore outside of typical gender boundaries.<sup>14</sup>

### Significance

- Latinx population is rapidly growing,<sup>15</sup> and have distinct cultural values.<sup>10</sup>
- SR linked to academic achievement and important for developmental milestones.<sup>16</sup>